

INSTALLATION GUIDE USER MANUAL

MP-800 TRANSFER

For MP-800 with firmware version 8.1 and up

Version 2.4 dated **2018-10**



LIST-MAGNETIK

Dipl.-Ing. Heinrich List GmbH

D-70771 Leinfelden-Echterdingen Max-Lang-Str. 56/2
Fon: + 49 (711) 903631-0 Fax: + 49 (711) 903631-10
Internet: <http://www.list-magnetik.de>
E-mail: info@list-magnetik.de



CONTENTS

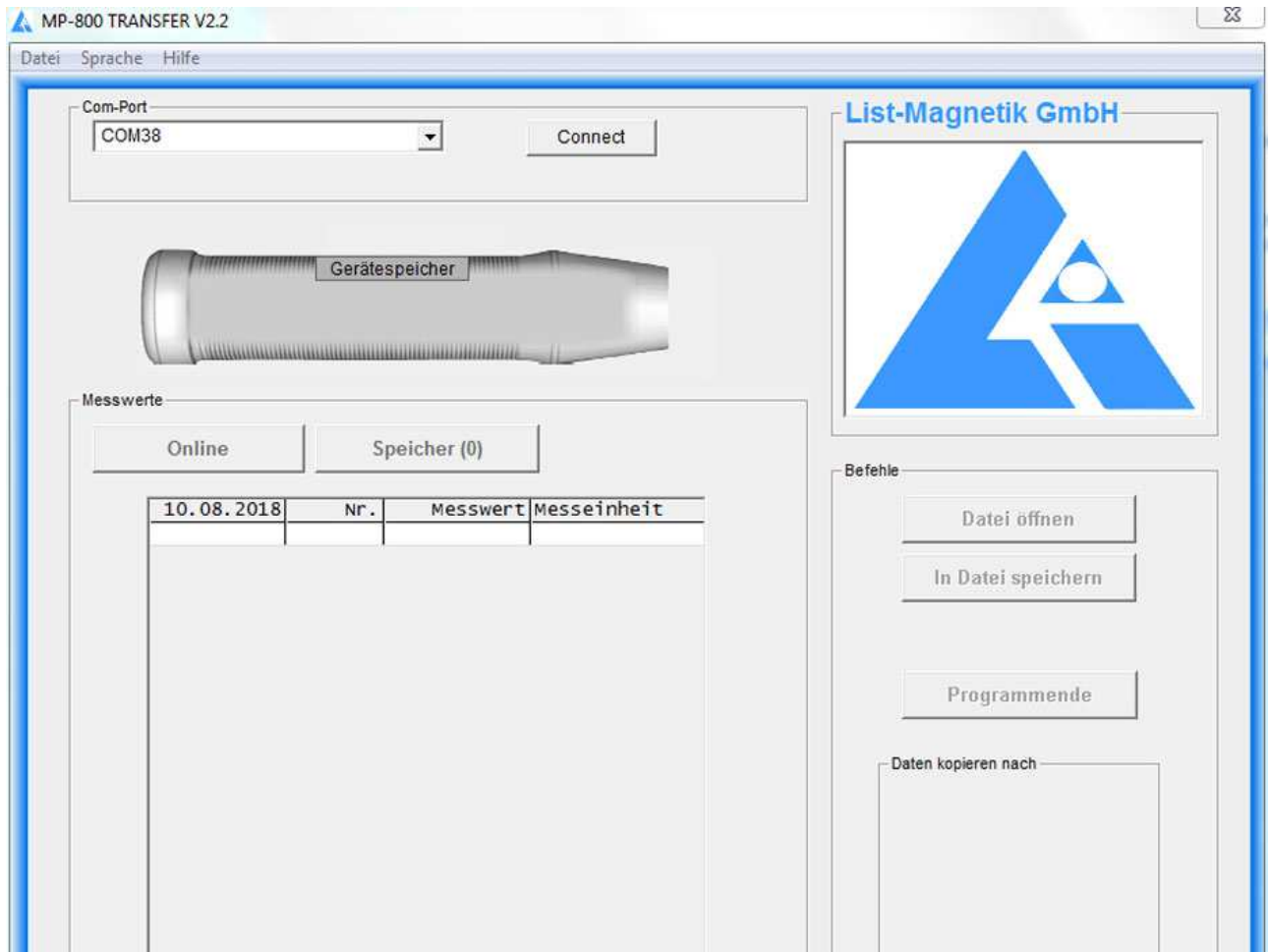
MP-800 TRANSFER (2018-10)

1. MP-800 TRANSFER Application.....	2
2. Preparing Bluetooth Connection.....	3
A) Installation of the Bluetooth USB Dongle.....	3
B) Pairing MP-800	4
Detecting the COM-Port	6
3. Installing the Application.....	7
4. Functions	8
Step 1: Connect.....	8
Measuring Online	9
Read data from device	10
Output: File, Printer, Applications.....	11

1. MP-800 TRANSFER APPLICATION

At www.list-magnetik.com in the „Download“ area you can obtain the free of charge application **MP-800 TRANSFER** to transfer data from you MP-800 device to a Windows PC or laptop.

With MP-800 TRANSFER you can measure online, or read the device's memory, you can print the results or transfer them to various applications like Microsoft Word or Microsoft Excel.



The stability of the Bluetooth connection is the better, the closer you hold the meter to the PC or the Bluetooth dongle.

If you face connection problems, please shorten the distance to 30 cm.

2. PREPARING BLUETOOTH CONNECTION

Does your PC / laptop have a built-in Bluetooth interface?

If yes, skip point 2a and continue at 2b.

A) INSTALLATION OF THE BLUETOOTH USB DONGLE



For MP-800 a Bluetooth dongle is included as shown.

The additional installation of a driver software can be used for communication setup between MP-800 and a Windows PC. Please check first, if the connection between MP-800 and your PC via Bluetooth works without software installation, only by inserting the Bluetooth dongle.

If you can't connect, perform the installation of the driver that can be obtained at

<http://www.list-magnetik.com/en/download-en>

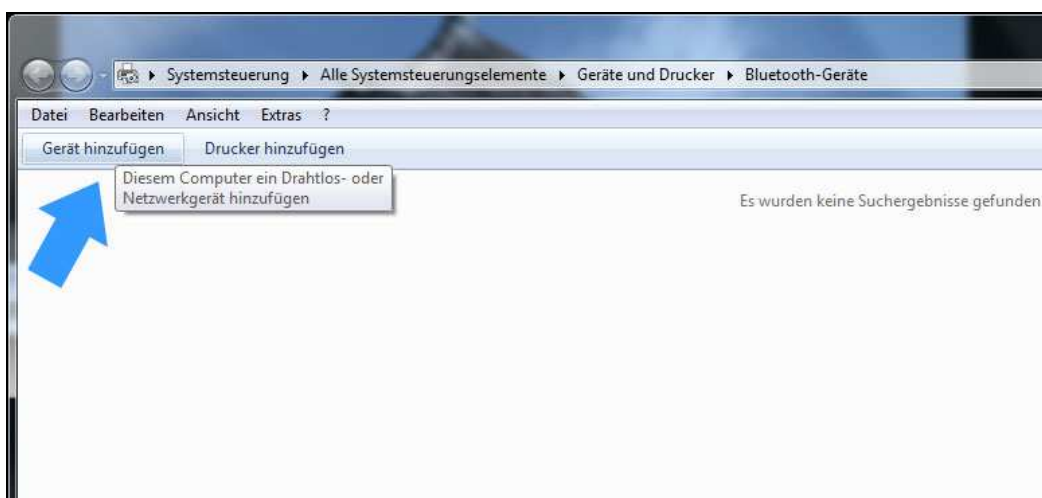
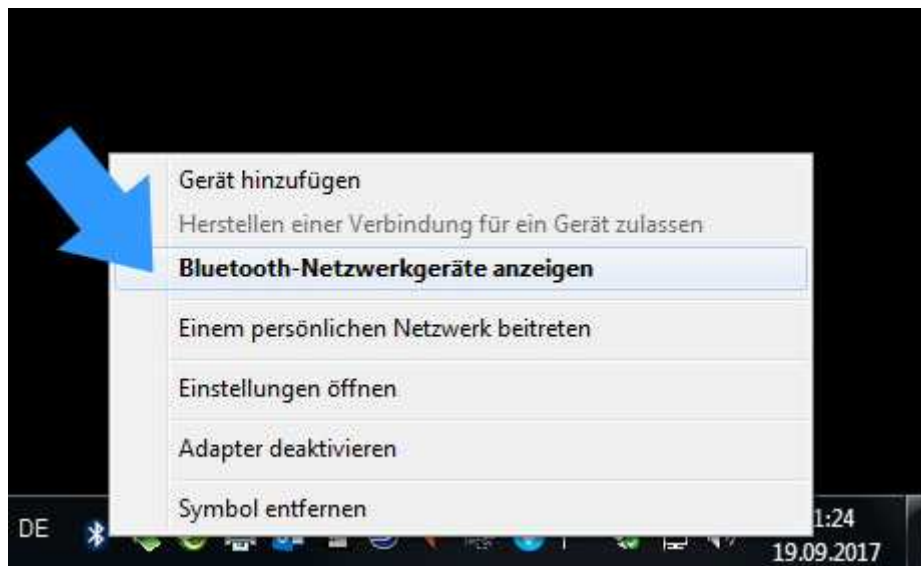
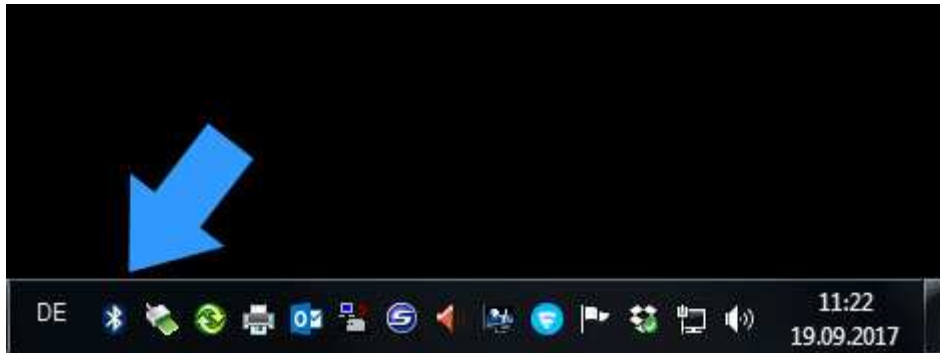
The file is named BCM20702 _..., depending on the version of your Windows operating system. It is available for Windows XP, Win 7, Win 8 or Win 10.

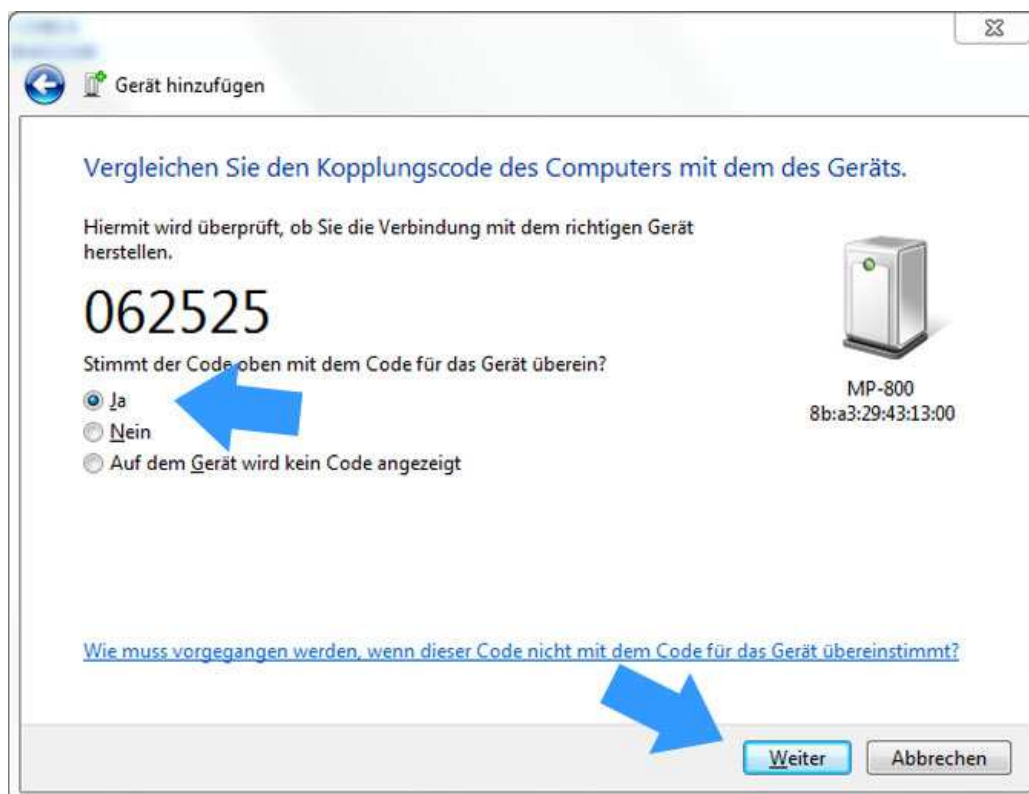
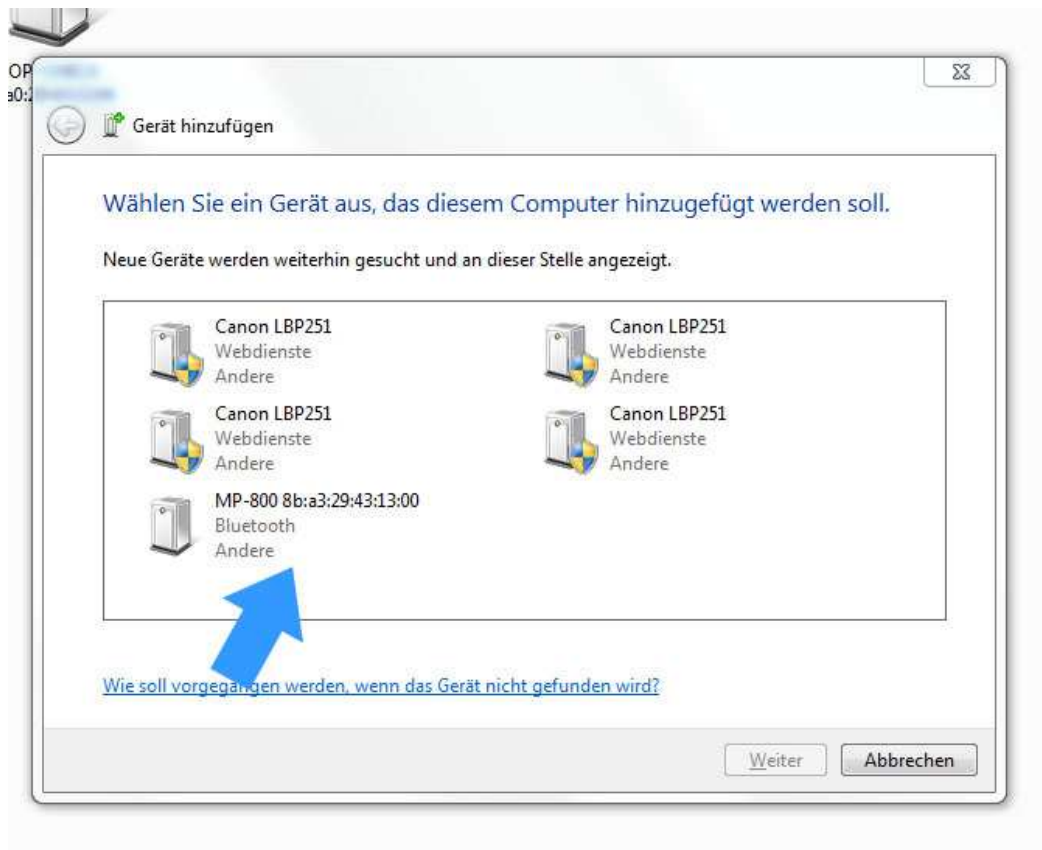
B) PAIRING MP-800

Your MP-800 device must be paired with the PC.

For this purpose, the coupling must be executed on both devices.

The function **SETUP / BLUETOOTH / ON** must be executed at the MP-800 device, and afterwards a device search in the Bluetooth menu on the PC.

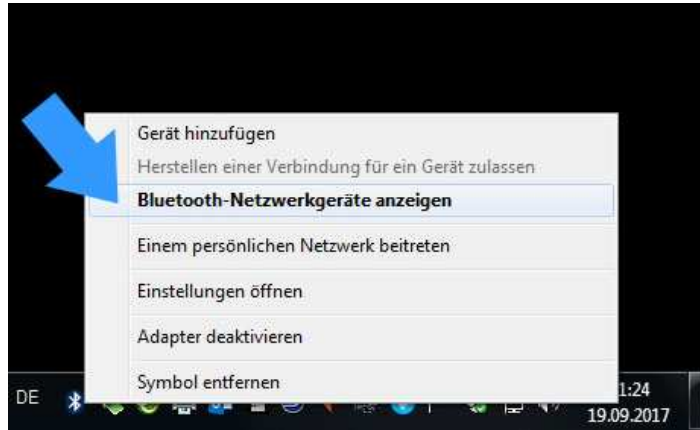




On the PC, the identified MP-800 device must be selected, and the coupling request must be confirmed. An identification number is shown, which you can confirm but ignore.

DETECTING THE COM-PORT

After successful coupling, the MP-800 is assigned to a so-called COM Port. This assignment remains permanent. Before starting the application MP-800 TRANSFER, you must know the number of this port.



To do this, please determine the assigned COM port number in the Bluetooth device menu. You need to know this at the start of the application MP-800 TRANSFER.

For Windows 10, 2 COM ports are displayed, take the "outbound" number.

Windows 7

A screenshot of the Windows 7 Device Manager. The 'Geräte (2)' section is expanded, showing two Bluetooth devices: 'MP-800 8ba3:2943:1300' and 'TOP-CHECK 8ba3:2943:1300'. A context menu is open over the MP-800 device, and a blue arrow points to the 'Eigenschaften' option.

A screenshot of the 'Eigenschaften von MP-800 8ba3:2943:1300' window. The 'Bluetooth' tab is selected. Under the 'Bluetooth-Dienste' section, the 'Serieller Anschluss (SPP) "Serial Port"' is checked, and the assigned COM port is 'COM25'. A blue arrow points to this entry.

Windows 10

A screenshot of the Windows 10 Settings app, 'Geräte' > 'Bluetooth' section. The Bluetooth toggle is turned on. A list of Bluetooth devices is shown, including 'TOP-CHECK_2079', 'Mooshimeter V.1', and 'MP-800 8ba3:2943:1300'. A blue arrow points to the MP-800 device.

A screenshot of the 'Bluetooth-Einstellungen' window for the MP-800 device. The 'COM-Anschlüsse' tab is selected, showing a table of COM ports. A blue arrow points to the 'COM1' entry, which is marked as 'Ausgehend' (outbound).

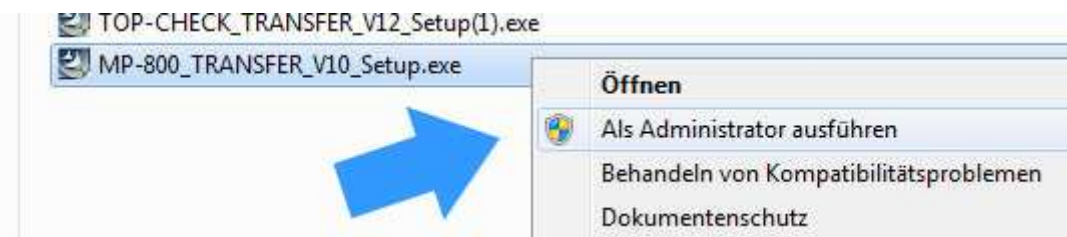
Anschluss	Richtung	Name
COM10	Ausgehend	TOP-CHECK_2079 "Serial port"
COM19	Eingehend	TOP-CHECK_2079
COM20	Eingehend	MP-800 8ba3:2943:1300
COM21	Ausgehend	MP-800 8ba3:2943:1300 "Serial Port"
COM9	Eingehend	MP-800 8ba3:2943:1300

3. INSTALLING THE APPLICATION

The installation package is called "MP-800_TRANSFER_Vxx_Setup.exe" (xx = version number) and available for download at

<http://www.list-magnetik.com/de/download>

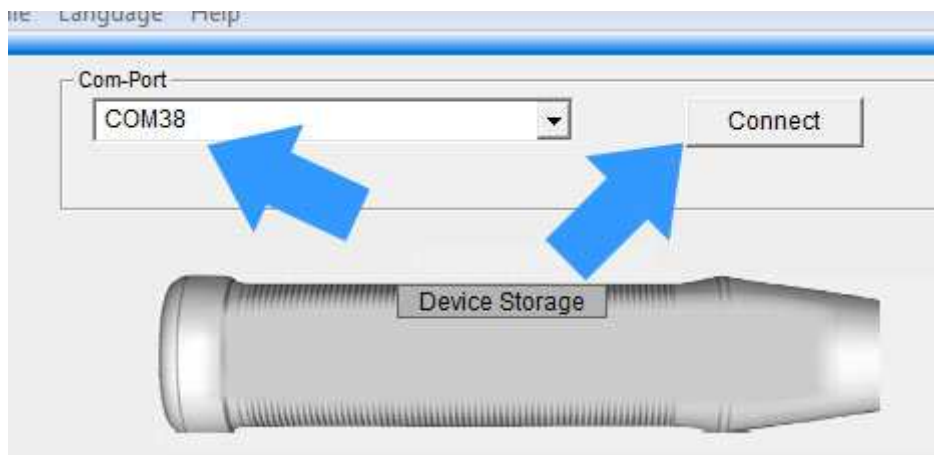
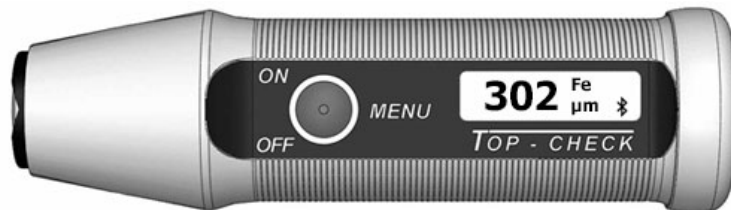
This package must be installed as administrator.



4. FUNCTIONS

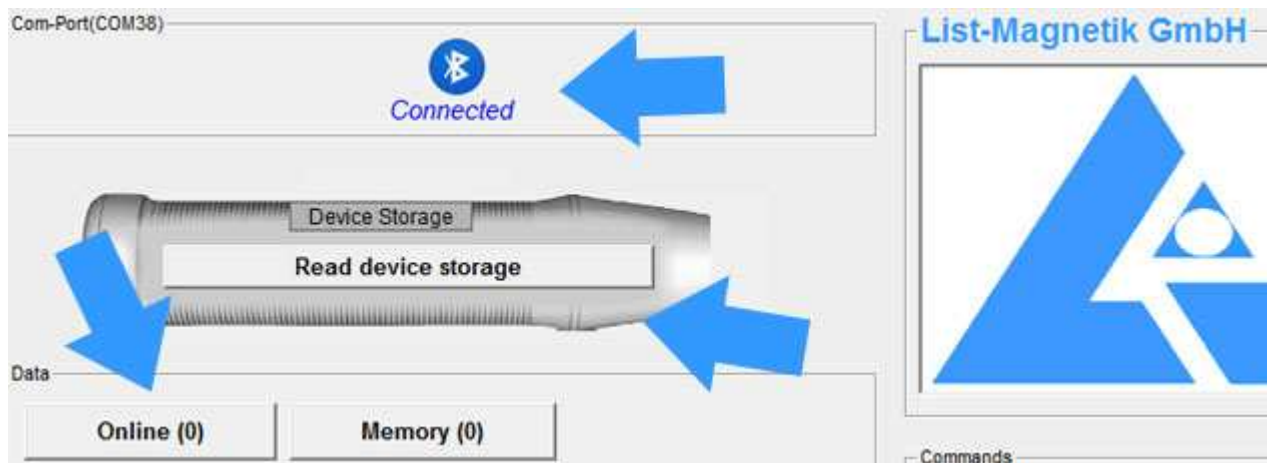
STEP 1: CONNECT

To connect, you need the number of the COM port that you detected in chapter 2. Your MP-800 must be switched on, and Bluetooth must be active in the MP-800. You can see it: the Bluetooth indicator at the bottom right.



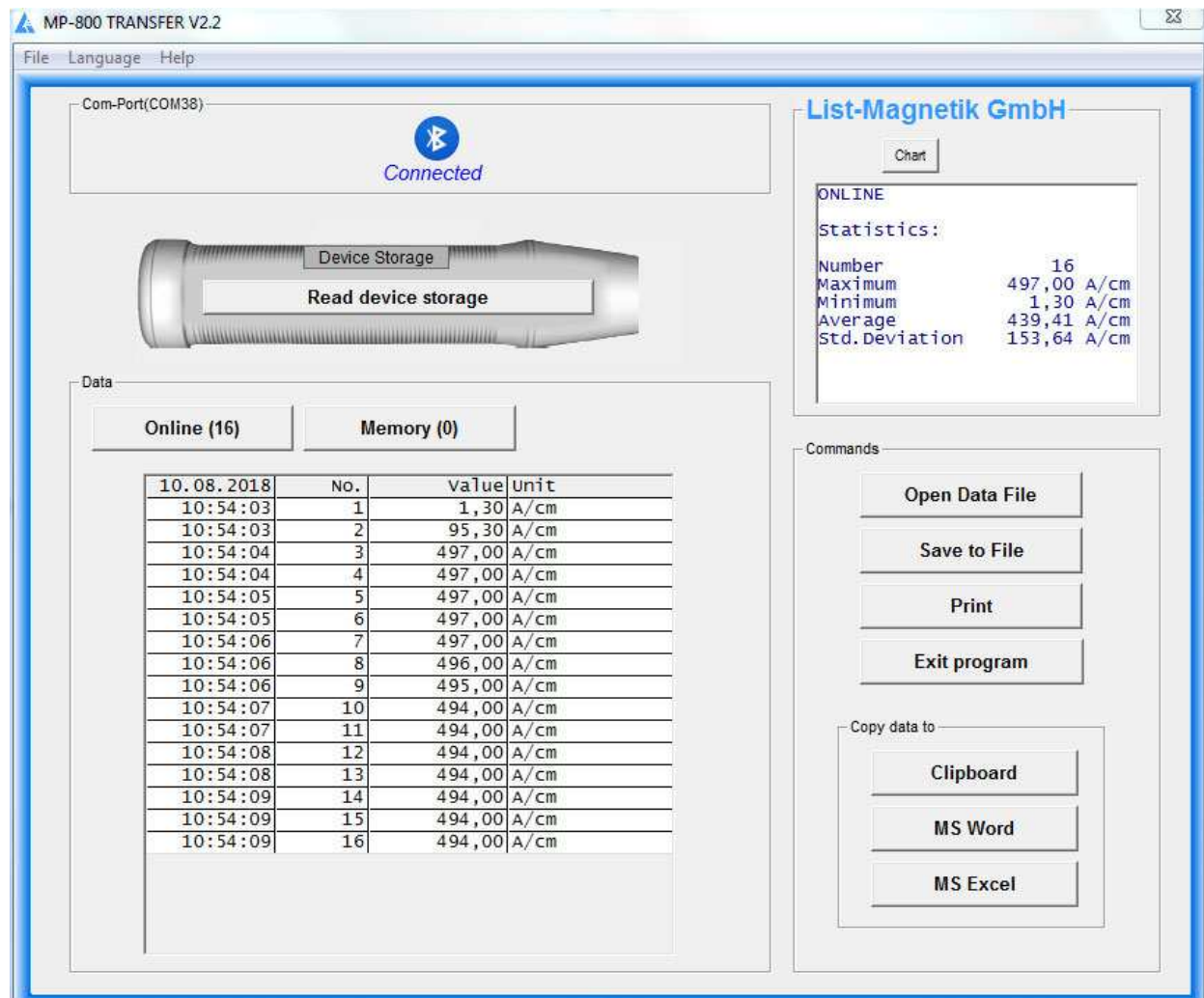
After successful connection, the name changes to "Connected" and the selection box for the COM port becomes invisible. The selected and connected COM port is now shown in the headline.

The left of the 2 buttons above the table is displayed with "Online", and the upper is now called "Read device storage".



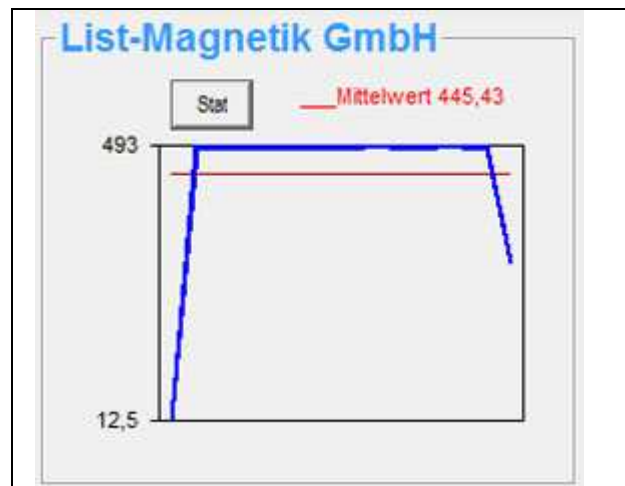
MEASURING ONLINE

Now you can start your work.
For example, you can directly perform online measurements.



Statistical values are automatically generated from the second measurement: Minimum, Maximum, Average (Mean) and Standard Deviation (Std.Dev).

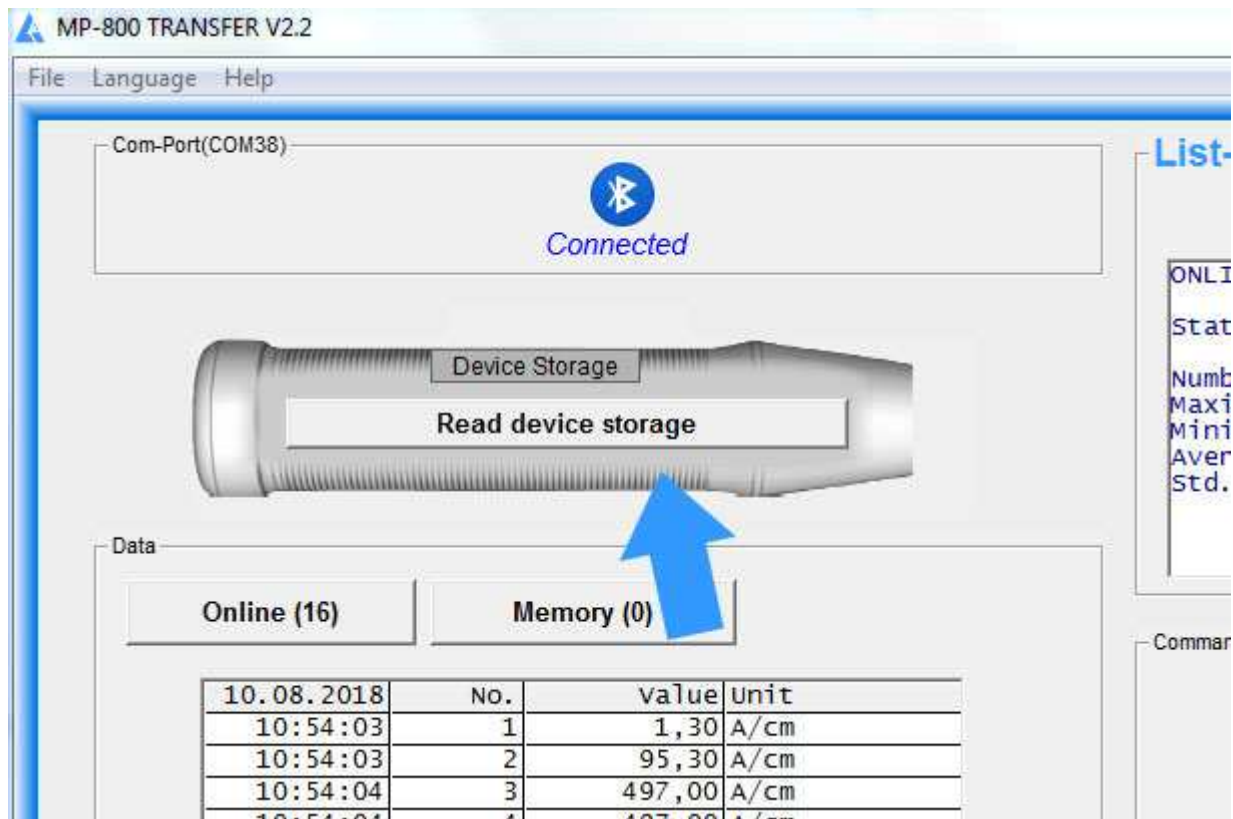
To toggle between the numeric statistic and a line diagram, please use the button "Chart" and "Stat".



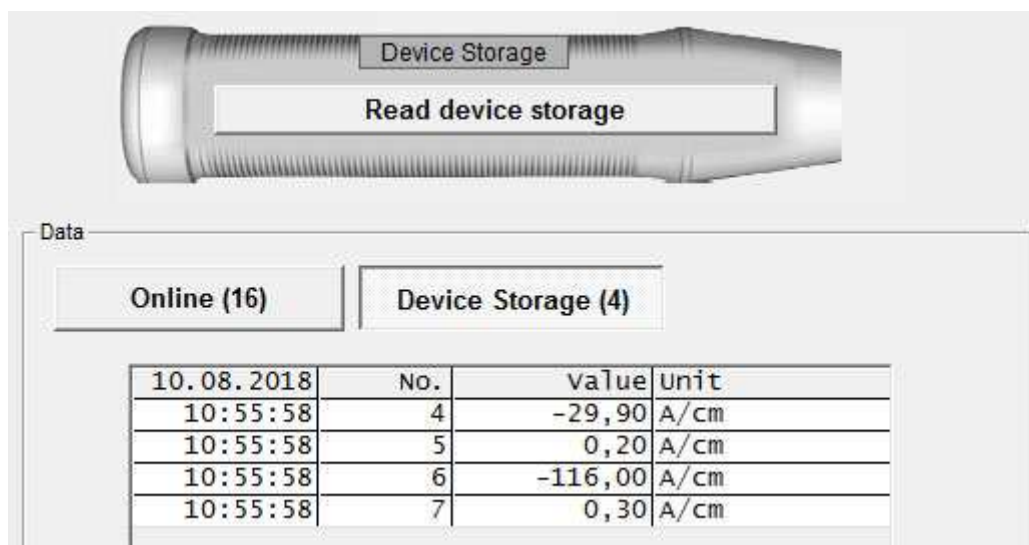
For further processing of the data, see the following sections.

READ DATA FROM DEVICE

If you already have measured values in the device memory, these can be read from the device by the application.



As long as the transfer is running (display: "please wait ...") all activities are blocked. The counter behind the title of the measurement series, "Device Storage", counts the transferred measurements.

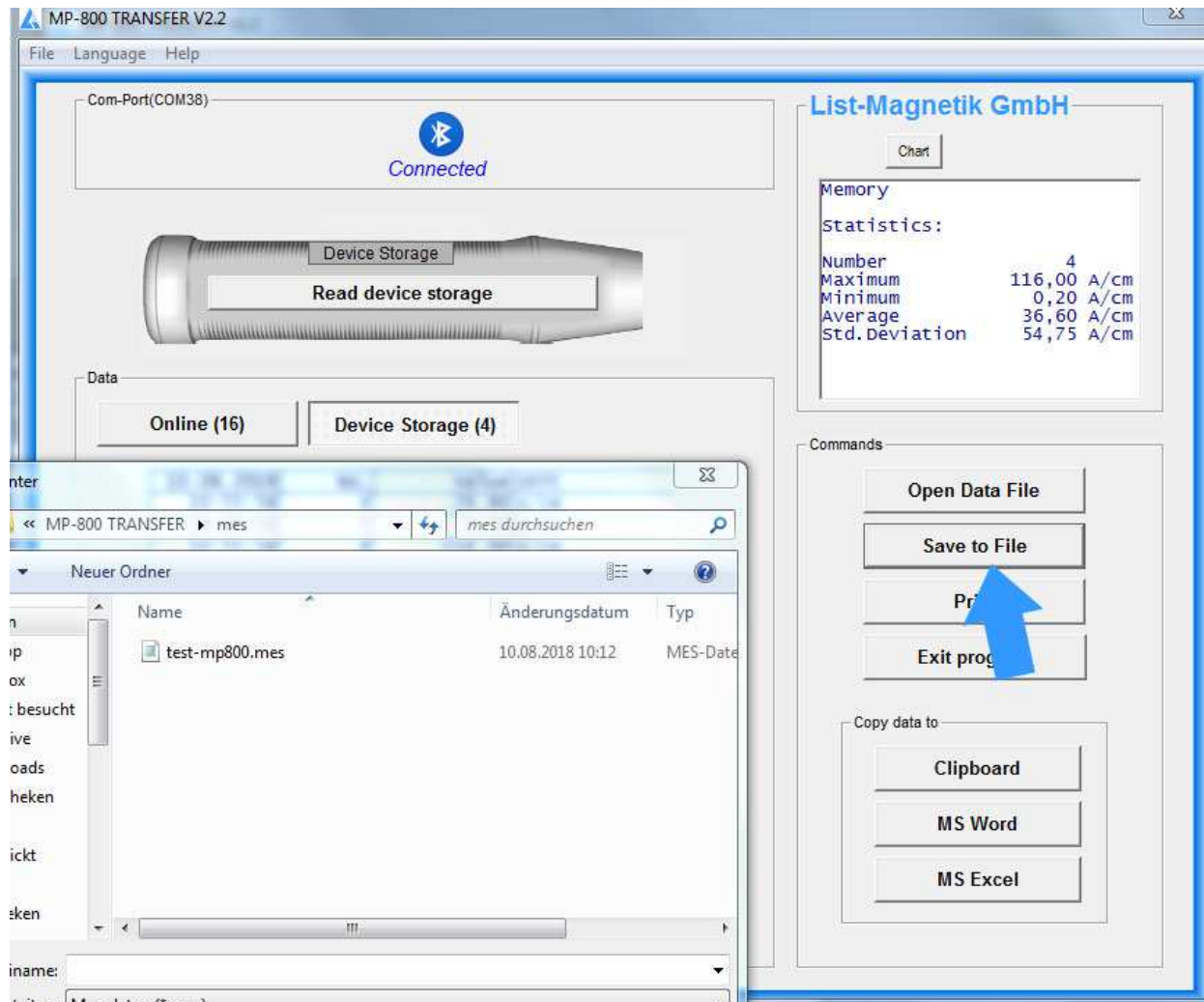


Once the measurement series has been read, the buttons are active again and the statistical data is filled.

If the device memory stack is empty, no title is displayed in the second button, and the button remains inactive.

OUTPUT: FILE, PRINTER, APPLICATIONS

The measurement series can be stored in a file.
Files of type ".mes" are readable with a text editor.



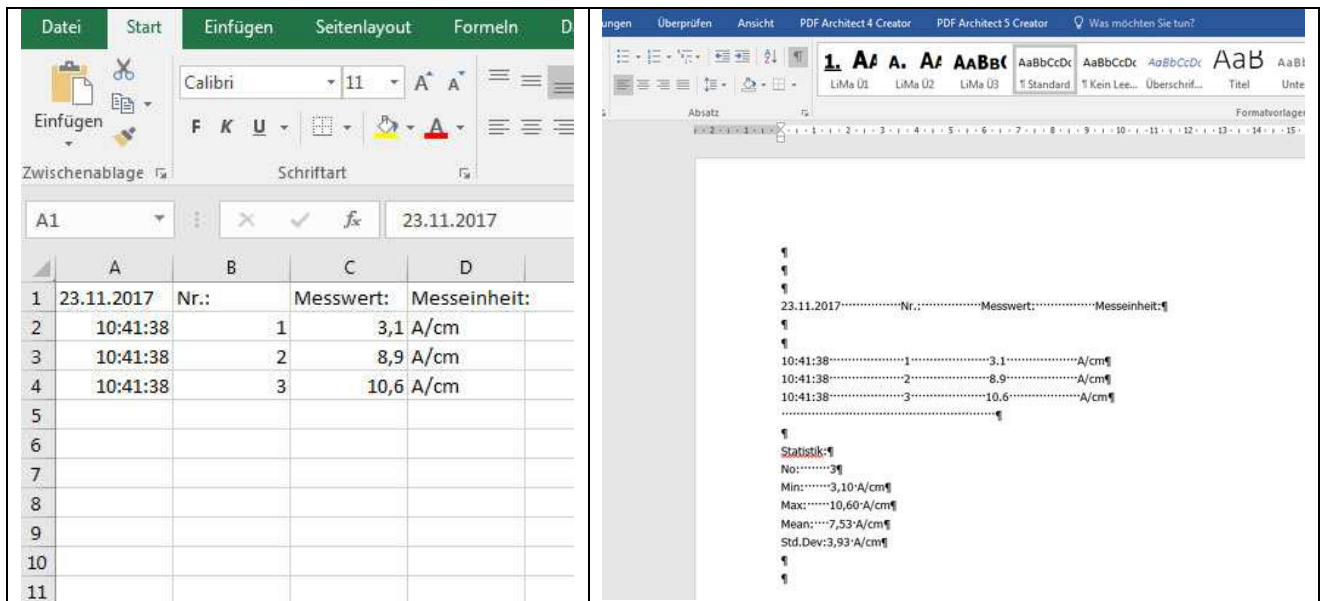
With the button "Open Data File" such a series of measurements can be read again from file, for example to print it or to transfer to Excel.

```
Speicher
Statistik:
Anzahl          4
Maximum         116,00 A/cm
Minimum         0,20 A/cm
Mittelwert      36,60 A/cm
Std.Abweichung  54,75 A/cm

10.08.2018  Nr.      Messwert
10:12:17    4       -29,90 A/cm
10:12:17    5         0,20 A/cm
10:12:17    6      -116,00 A/cm
10:12:17    7         0,30 A/cm
```

Example of a print output via button „Print“

The Buttons „MS Word“ and „MS Excel“ only will work if the named Microsoft Office components are installed, but not with Open Office.



Via Clipboard you can hand over the measuring series to subsequent applications.